

CK 15

CK 20

Block 18

City Co Bdy

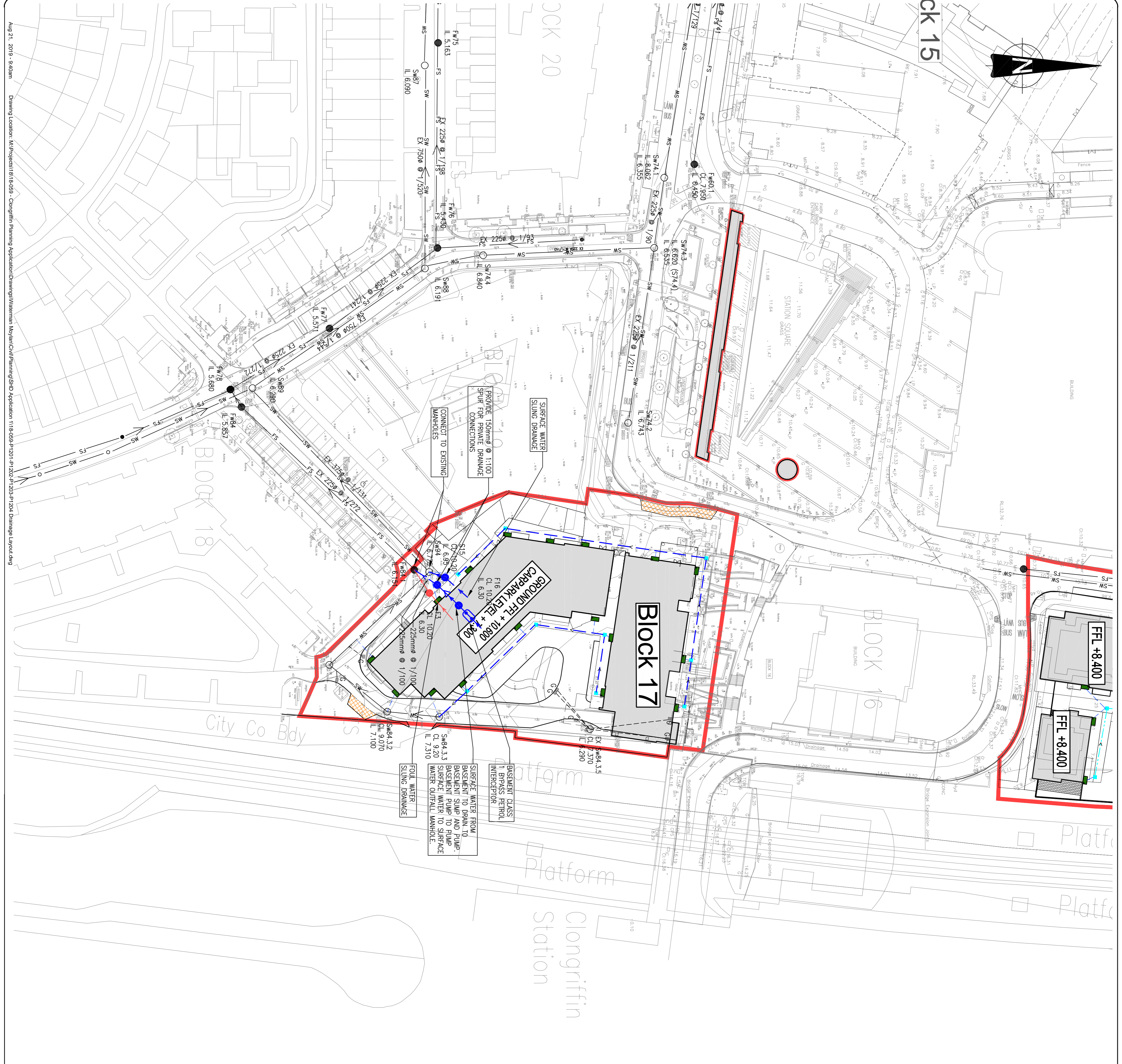
Clongriffin Station

Block 16

Block 17

FEL +8.400

FEL +8.400



DRAINAGE NOTES:

1. ALL PROPOSED PUBLIC STORM WATER DRAINAGE WORKS TO BE IN ACCORDANCE WITH FINAGH COUNTY COUNCIL'S REQUIREMENTS FOR TAKING IN RANGE AND IN ACCORDANCE WITH THE GREATER DUBLIN REGIONAL CODE OF PRACTICE AND IN ACCORDANCE WITH THE GREATER DUBLIN REGIONAL CODE OF PRACTICE FOR ALL PROPOSED PUBLIC FLOOD WATER DRAINAGE WORKS TO BE IN ACCORDANCE WITH IRISH WATER REQUIREMENTS.

2. ALL PRIVATE DRAINAGE WORKS SHALL BE IN ACCORDANCE WITH THE BUILDING REGULATIONS PART H.

3. ALL COVER LEVELS ARE INDICATIVE ONLY AND SHOULD BE SET TO SUIT THE FINISHED ROAD OR PAVED LEVEL. LEVELS IN REAR GARDENS HAVE BEEN ASSUMED AS STRAIGHT GRADE TO ADJACENT BOUNDARY FROM FEL +150mm. EXTERNAL LEVELS TO BE CONFIRMED BY ARCHITECT.

GRANITY SEWER PIPE MATERIAL TYPES

WASTEWATER PIPE MATERIALS SHALL BE IN ACCORDANCE WITH SECTION 3.13 OF THE IRISH WATER CODE OF PRACTICE FOR WASTEWATER INFRASTRUCTURE. THE TYPES AND FITTINGS OUTLINED HEREIN SHALL BE USED IN THE CONSTRUCTION OF THE GRANITY SEWERS. PIPE MATERIAL SHOULD NOT BE INSTALLED BY PIPE JACKING OR MICRO TUNNELING.

CONCRETE: CONCRETE SEWER PIPES WITH SPOUT AND SOCKET JOINTS AND RUBBER RING FITTINGS SHALL COMPLY WITH IS EN 1916 (2002), BS 5911, PART 1 (2002-2010) AND IS 6 (2004) OR EQUIVALENT STANDARD. STRENGTH CLASS 120 WITH MINIMUM CRUSHING LOADS IN ACCORDANCE WITH TABLE 8 OF BS 5911-1 (2002/2010).

ALL PIPES AND FITTINGS SHALL HAVE CASKET TYPE JOINTS OF SPOUT AND SOCKET OR BEATED FORAL (PIPE DIAMETERS 225MM AND ABOVE).

THERMOPLASTIC STRUCTURED WALL PIPES: THERMOPLASTIC STRUCTURED WALL PIPES SHALL COMPLY WITH THE PROVISIONS OF IS EN 13476 (2007/2009), PIPES TO BE OF STIFFNESS CLASS B/N/2 AND TO BE CAPABLE OF DEMONSTRATING A JETTING RESISTANCE OF 2.600 PSI (180 BAR) WITHOUT DAMAGE WHEN TESTED IN ACCORDANCE WITH SECTION 3.3 OF WIS 4-35-01 (2008). (SEWER DIAMETERS 150MM UP TO 450MM, SERVICE CONNECTIONS OF 100MM DIAMETER).

UNDERSTRESSED PVC UNDERSTRESSED PVC PIPES AND FITTINGS SHALL COMPLY WITH THE PROVISIONS IS EN 1401 2009/2012. PIPES TO BE APPLICATION AREA CODE 'UJ'. STIFFNESS CLASS B/N/2. PROVISION FOR JETTING SHALL BE BASED ON THE IRC SINKER JETTING CODE OF PRACTICE, JUNE 1997. PIPES TO BE CAPABLE OF RESISTING A MAXIMUM JETTING FLOW PRESSURE OF 2.600PSI (180 BAR) WITHOUT DAMAGE. (SEWER DIAMETERS 150MM UP TO 450MM, SERVICE CONNECTIONS OF 100MM DIAMETER).

OTHER: THE USE OF ALTERNATIVE PIPE TYPES AND MATERIALS WILL REQUIRE THE PRIOR WRITTEN AGREEMENT OF IRISH WATER.

WHERE 1.2m COVER TO FOUL WATER PIPE SOFFIT IS NOT ACHIEVABLE IN ROADWAYS, CONCRETE SURROUND SHALL BE PROVIDED IN ACCORDANCE WITH STD-WW-08 OF WASTEWATER INFRASTRUCTURE STANDARD DETAILS.

SERIAL LAYOUT DISTANCES:

HORIZONTAL AND VERTICAL SERVICE LAYOUT DISTANCES SHALL BE AS PER IRISH WATER STANDARD DETAIL STD-WW-05.

THE EXTERNAL FACE OF MANHOLES SHALL BE AT LEAST 0.5m FROM KERB LINE.

RESTRICTIONS ON PLANTING:

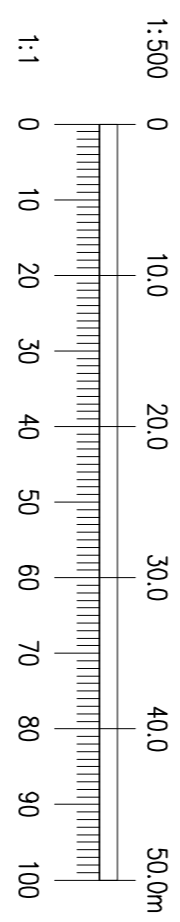
PLANTING ADJACENT TO WASTEWATER INFRASTRUCTURE SHALL BE IN COMPLIANCE WITH IRISH WATER STANDARD DETAILS STD-WW-06 AND STD-WW-06A.

BASEMENT DRAINAGE:

ALL WASTEWATER FROM BASEMENTS SHALL BE PUMPED TO GROUND LEVEL TO DISCHARGE BY GRANTY TO THE IRISH WATER NETWORK IN ACCORDANCE WITH SECTION 3.25 OF THE IRISH WATER CODE OF PRACTICE FOR WASTEWATER INFRASTRUCTURE. THE PUMPED WASTEWATER SHALL DISCHARGE INITIALLY TO A STANDOFF MANHOLE BEFORE DISCHARGING TO A GRANITY SEWER CONNECTION TO A MANHOLE ON THE PUBLIC SEWER.

LEGEND:

- FX - PROPOSED FOUL WATER SEWER WITH PIPE SIZE, GRADE, MANHOLE REF. AND INVERT LEVEL.
- SX - PROPOSED SURFACE WATER SEWER WITH PIPE SIZE, GRADE, MANHOLE REF. AND INVERT LEVEL.
- XXXX @ 1/XXX - PROPOSED PERFORATED SURFACE WATER PIPE WITH ACCESS JUNCTION / INSPECTION CHAMBER.
- FC - PROPOSED FOUL INSPECTION CHAMBER.
- EX XXXX @ 1/XXX - EXISTING FOUL WATER SEWER WITH PIPE SIZE, GRADE, MANHOLE REF. AND INVERT LEVEL.
- EX XXXX @ 1/XXX - EXISTING SURFACE WATER SEWER WITH PIPE SIZE, GRADE, MANHOLE REF. AND INVERT LEVEL.
- TS - EXISTING 1600mm NORTH FRANGE INTERCEPTOR SEWER.
- PERMEABLE FRANKING.
- PROPOSED GULLY AND CONNECTION.
- EXISTING GULLY.



Ordnance Survey Ireland Licence No. EN 0006019
© Ordnance Survey Ireland/Government of Ireland.

REV.	DATE	AMENDMENT	DRN	APPD
A	12/06/18	REVISED FOR FINAL SUBMISSION	PJD	MD

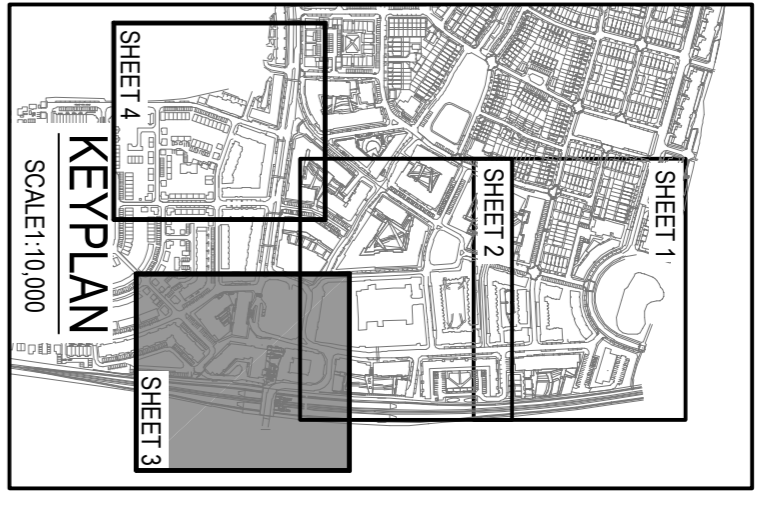
FOR PLANNING NOT FOR CONSTRUCTION

Waterman Moylan Engineering Consultants
BLOCK 5, EASTPOINT BUSINESS PARK, ALFIE BRYNE ROAD, DUBLIN D03 H9F4 IRELAND. TEL: 011 964 8600
EMAIL: info@watermanmoylan.ie www.watermanmoylan.ie

CLIENT: GERARD GANNON PROPERTIES
ARCHITECT: CONROY CROWE KELLY
PROJECT: CLONGRIFIN SHD APPLICATION 1

TITLE	DESIGNED	APPROVED	DATE
DRAINAGE LAYOUT SHEET 3 OF 4	PJD	MD	NOV 18

SCALE	JOB NO.	PRG. NO.	REVISION
1:500 @ A1	18-059	P1203	A



NOTES:

1. DO NOT SCALE. USE FIGURED DIMENSIONS ONLY.
2. THIS DRAWING IS TO BE READ IN CONJUNCTION WITH ALL OTHER RELEVANT ARCHITECTURAL AND ENGINEERING DRAWINGS.
3. IT IS THE CONTRACTOR'S RESPONSIBILITY TO ENSURE THAT ALL WORKS ARE CONSTRUCTED IN ACCORDANCE WITH THE IRISH WATER CODE OF PRACTICE AND STANDARD DETAILS. THE CODE OF PRACTICE AND STANDARD DETAILS ARE AVAILABLE TO DOWNLOAD FROM THE IRISH WATER WEBSITE AT WWW.WATER.IE/CONNECTIONS/DEVELOPER-SERVICES/ WHERE THE DETAILS OBTAINED ON THIS DRAWING DIFFER FROM THE IRISH WATER CODE OF PRACTICE OR STANDARD DETAILS THIS MUST BE BROUGHT TO THE ATTENTION OF THE ENGINEER IMMEDIATELY. IRISH WATER STANDARDS WILL TAKE PRECEDENCE.